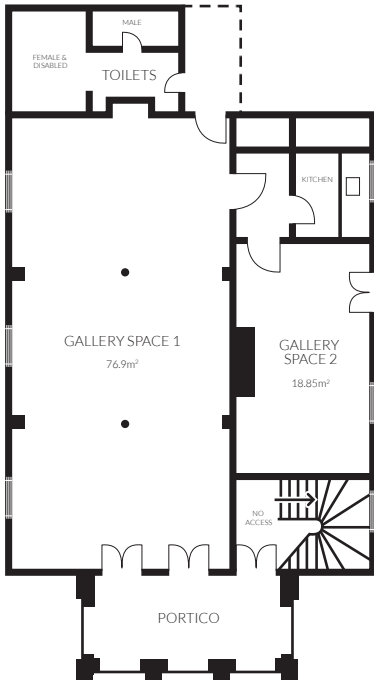


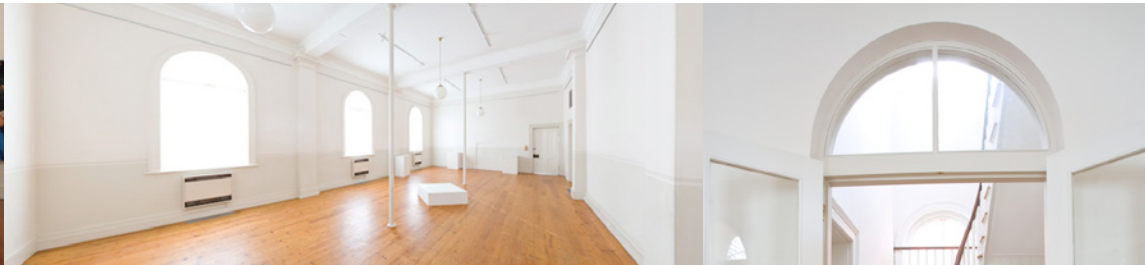


TOP OF THE TOWN



Dudley House overlooks the Queen Elizabeth Oval and is perched at the highest point of the View St arts precinct.

In warmer months, double doors open to the historic terrace and lawns, a perfect entrance from bustling View Street.



Dudley House was one of the first government offices erected in Bendigo's Camp Hill area following the discovery of gold in 1851. It was constructed in 1858-1859 by building contractors Gretch and Cooper for the public works department and served as the residence and office for Bendigo's first surveyor, Richard Larritt.

The building is one of the earliest and most intact 1850s buildings remaining in the central administrative and commercial precinct of Bendigo, now operating as a gallery, function and event space.

Two light and functional gallery spaces on the ground floor are serviced by a kitchenette and a private boardroom on the first floor can double as a perfect break-out space.

VENUE CAPACITY - DUDLEY HOUSE

	DIMENSIONS	AREA (M ²)	THEATRE	BANQUET	CLASSROOM	BOARDROOM	CABARET	U-SHAPE	COCKTAIL
Exhibition Space	12000 x 6000	72	50	30	20	20	30	20	50



Dudley House

Access Services - We aim to make your visit as pleasurable as possible and offer a number of ways to help if assistance is required. Due to the historic nature of this building disabled access is limited in some areas.

50 View St, Bendigo, VIC 3552 T 03 5434 6100

WWW.CAPITALVENUESANDEVENTS.COM.AU

BENDIGO



Capitalvenues & events

Proudly owned and operated by the City of Greater Bendigo